



Case Air Wireless

TETHERING AND CAMERA CONTROL SYSTEM

PRODUCT MANUAL
CAWTS03



v3.16 Windows 

ABOUT CASE AIR

The Case Air Wireless Tethering System connects and transfers images instantly from your camera to a phone, tablet or computer using the downloadable Case Remote software/app. Case Air lets you control advanced camera settings including focus points, exposure settings, bracketing/HDR, time-lapse, and more. View your images on a larger screen to check critical focus and composition, or use Live View or movie mode for real-time capture to share and collaborate as you create.

CASE AIR CAMERA COMPATIBILITY

Visit www.TetherTools.com/CaseAir for a complete list of compatible cameras.



TABLE OF CONTENTS

- 3** Features / Accessories / Specs
- 4** Charging / Software Install
- 6** Connecting
- 7** Case Remote Program
- 8** Firmware Update
- 9** Capture Interface
- 10** Properties
- 11** Focus
- 12** Advanced Function
- 13** Time Lapse
- 14** Bulb Time
- 15** Focus Stacking
- 16** Bracketing/HDR
- 17** Movie
- 18** Gallery
- 19** Settings

FEATURES

- 1** Power Button
- 2** Status Light
- 3** Power Indicator Light
- 4** Micro-USB Port
- 5** Lanyard Connection Point
- 6** 1/4-20" Female Thread
- 7** SSID and Password



ACCESSORIES

- 1** USB Charging Cable
- 2** Quick-Release Lanyard
- 3** Hot Shoe Adapter

SPECIFICATIONS

Size:

2.64" (67.25mm) x 1.6" (40.11mm) x 0.55" (13.99mm)

Weight:

1.76 ounces (50 grams)

CPU:

400Mhz MIPS

RAM:

64M DDR2

WiFi:

802.11 b/g/n

Distance:

150 feet (45m)

Battery Life:

6-8 hours

Battery Type:

1380 mAh lithium battery

CHARGING

Case Air can be charged using any standard USB charger. Charging cables included.

BATTERY LEVEL

- **GREEN**
Full (>60%)
- **YELLOW**
Half (30-60%)
- **RED**
Low (<30%)

WiFi STATUS

- **BLUE FLICKER**
Starting or Updating
- **BLUE STABLE**
WiFi Available

POWER BUTTON

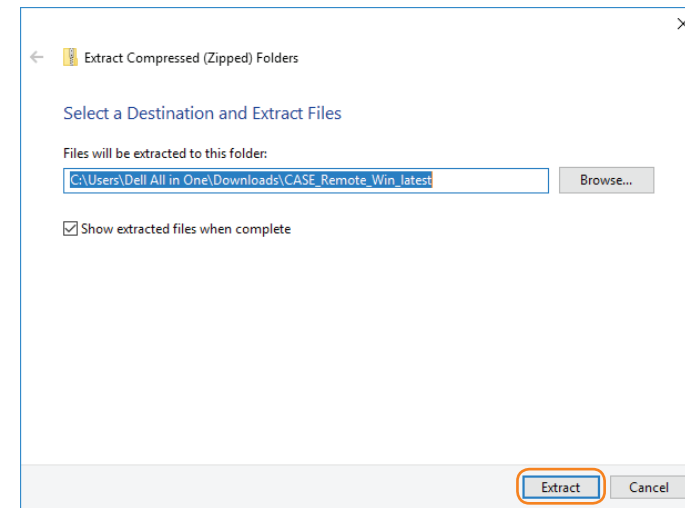


SOFTWARE INSTALL

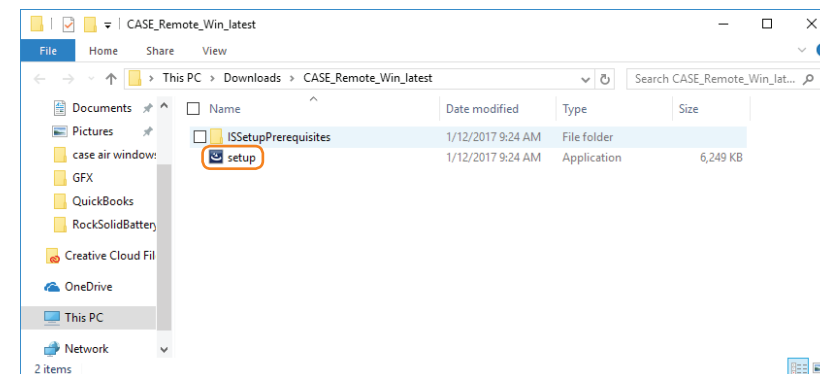
Make sure to install the Case Remote Program before using the Case Air for the first time.

To install Case Remote on your Windows computer, download Case Remote from the Tether Tools website: www.tethertools.com/caseairforwindows

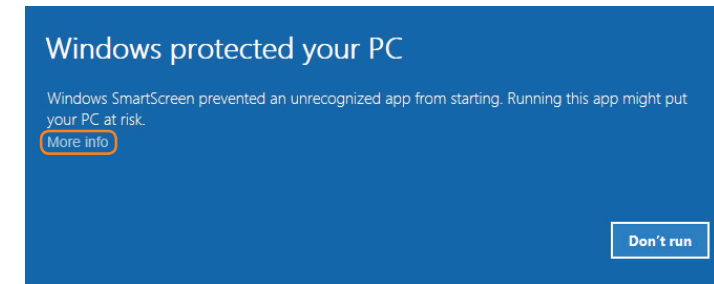
1 Extract the .zip file



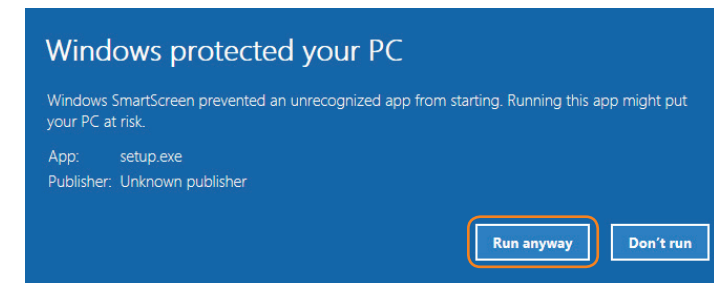
2 Double click setup



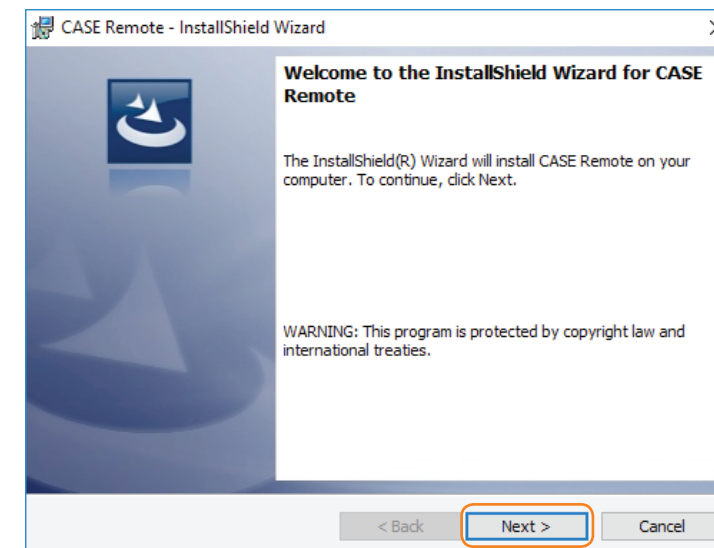
3 In blue pop-up window, click More Info



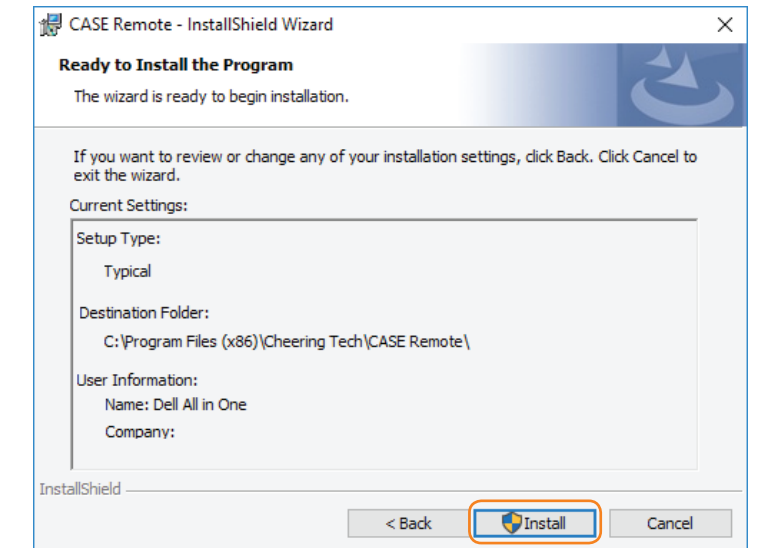
4 Click Run Away



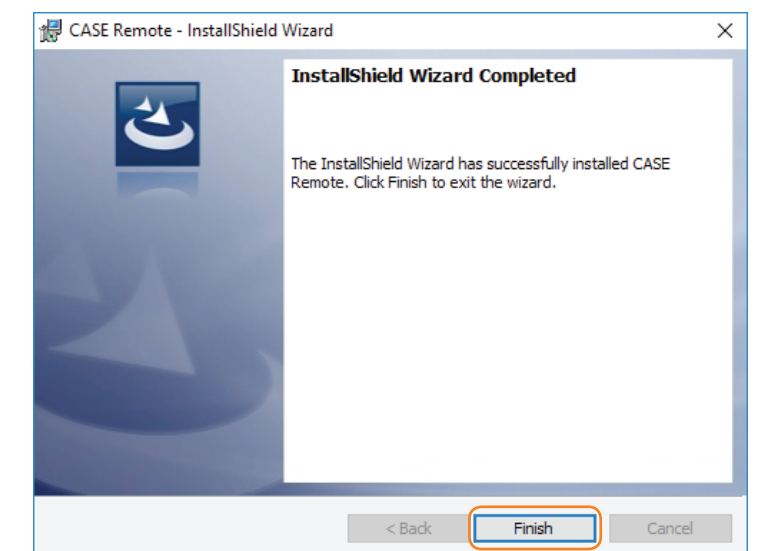
5 Install process will start, click Next



6 Click Install



7 Once complete, click Finish



CONNECTING

1 Connect the Case Air to your camera using the supplied USB cable that is compatible with your camera.

Included Case Air Connector Cables:

USB 2.0 Mini-B 5-Pin

USB 2.0 Mini-B 8-Pin

USB 3.0 Micro-B



2 Power on your camera. Power on the Case Air by pressing and holding the power button for more than 2 seconds.

POWER BUTTON



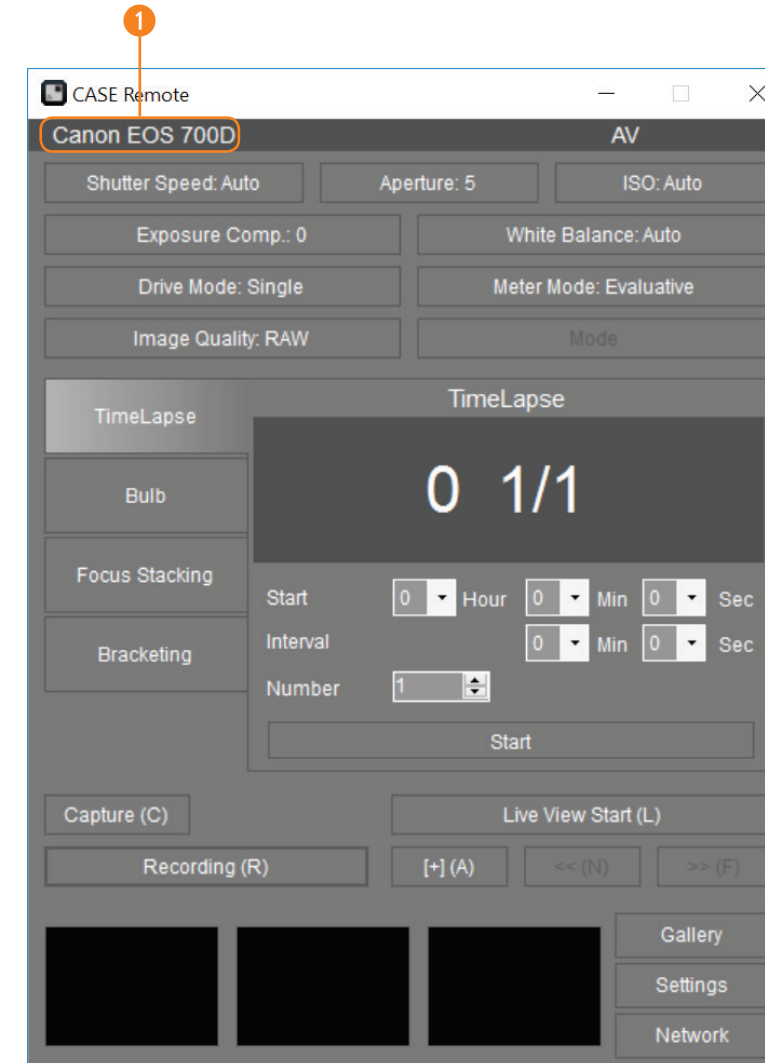
3 Connect to Case Air WiFi

(a) Make sure the Case Remote Program IS NOT running or open.

(b) Go to Wi-Fi settings in the system tray and connect to CASE_Rxxxxxx Wi-Fi and enter the PWD code from the back of the device when prompted for the password.



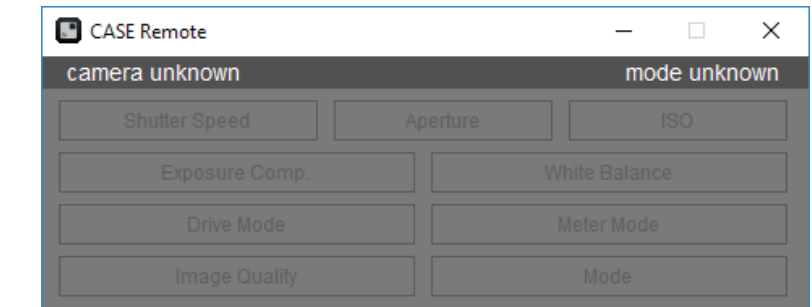
(c) Start the Case Remote Program.

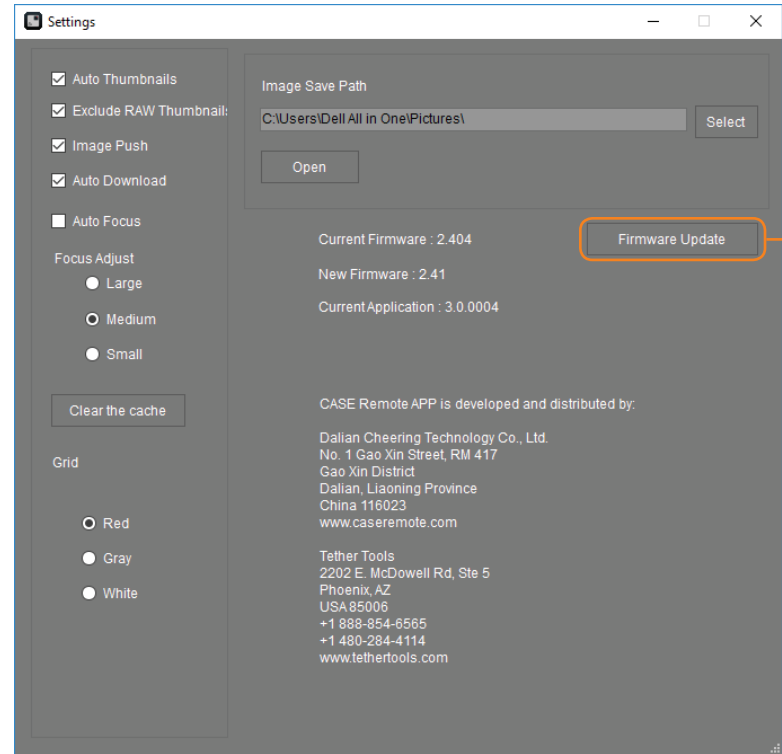


CASE REMOTE PROGRAM

1 Camera information

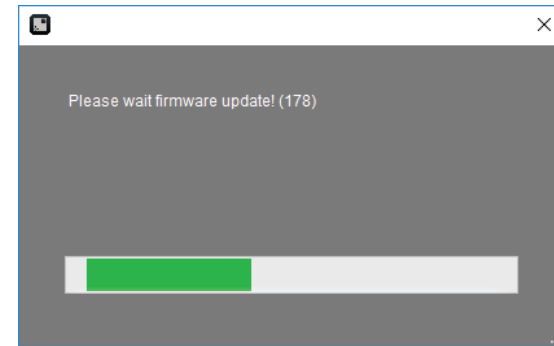
If the message below is displayed on your Case Remote Program, close the program and set up your WiFi connection then reopen the program to connect your camera to your Case Air.



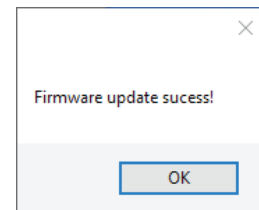


FIRMWARE UPDATE

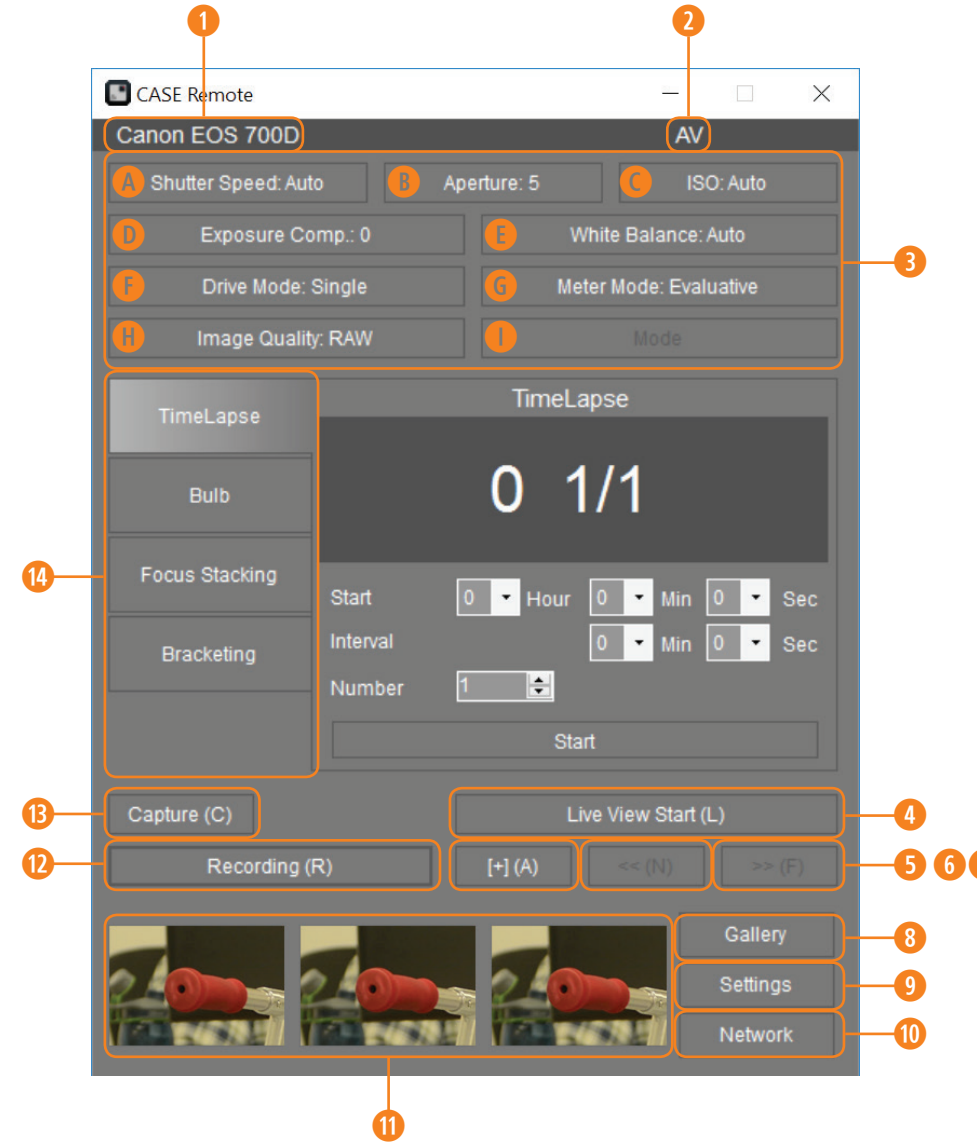
You can determine if a firmware update is needed by clicking on settings. Click Firmware Update, MAKE SURE the Case Air battery and the battery on the device you are connected to is fully charged prior to clicking Confirm.



DO NOT turn off the Case Air or Case Remote Program during the update process as this may damage the hardware and render the Case Air unrepairable. The firmware update process will take approximately 3 minutes.

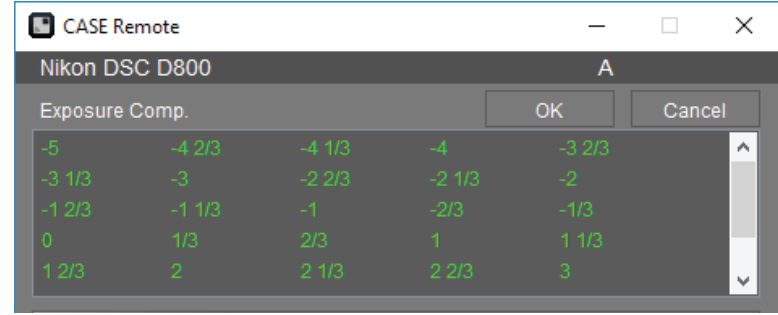
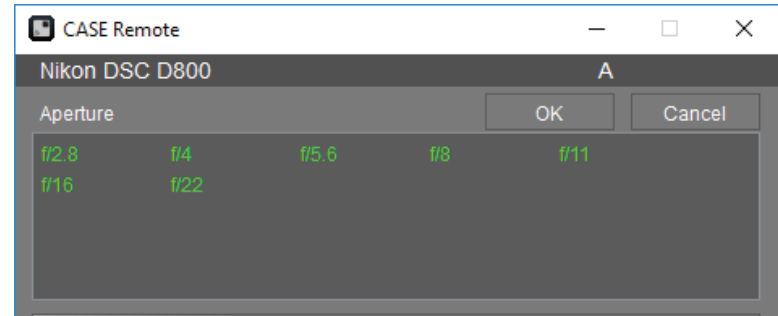


After the firmware update has completed, exit the Case Remote Program, ensure your device is connected to the Case Remote WiFi, then restart the Case Remote Program.



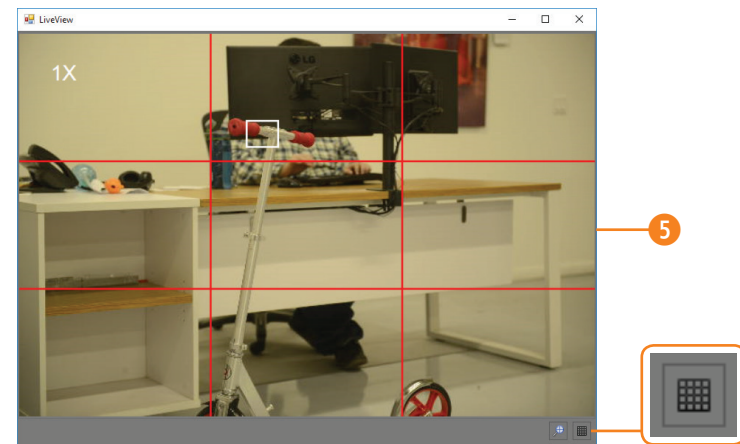
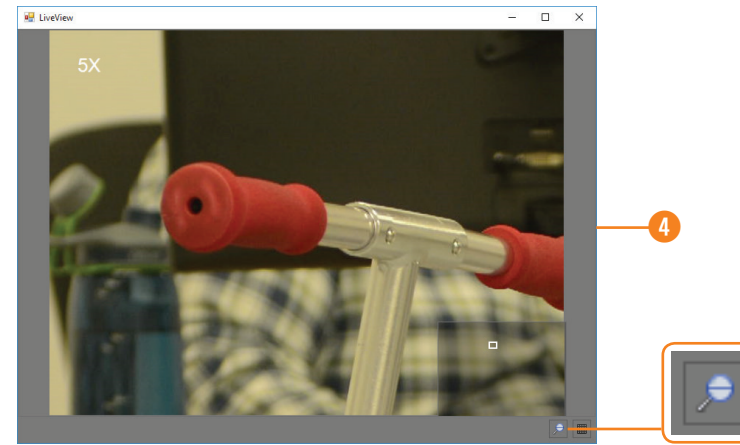
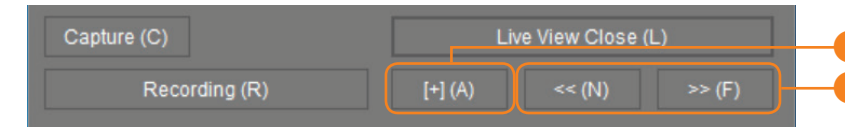
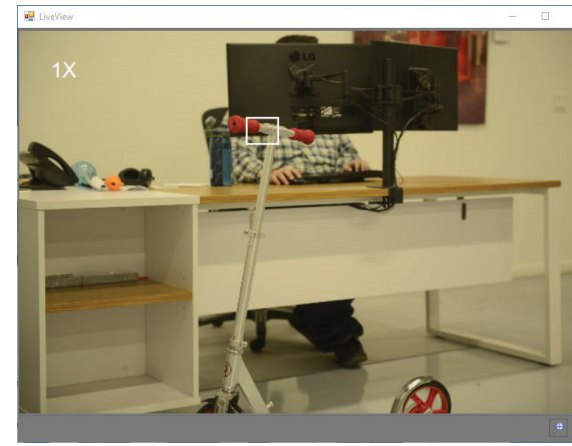
CAPTURE INTERFACE

- 1 Camera Model
- 2 Shooting Mode
- 3 Current Shooting Parameters
 - A Shutter Speed
 - B Aperture
 - C ISO
 - D Exposure Compensation
 - E White Balance
 - F Drive Mode
 - G Meter Mode
 - H Image Quality
 - I Shooting Mode
- 4 Live View
- 5 Auto Focus
- 6 Manual Focus (decrease)
- 7 Manual Focus (increase)
- 8 Gallery
- 9 Settings
- 10 WiFi Connection
- 11 Thumbnails
- 12 Movie Mode
- 13 Shutter
- 14 Advanced Function Buttons



PROPERTIES

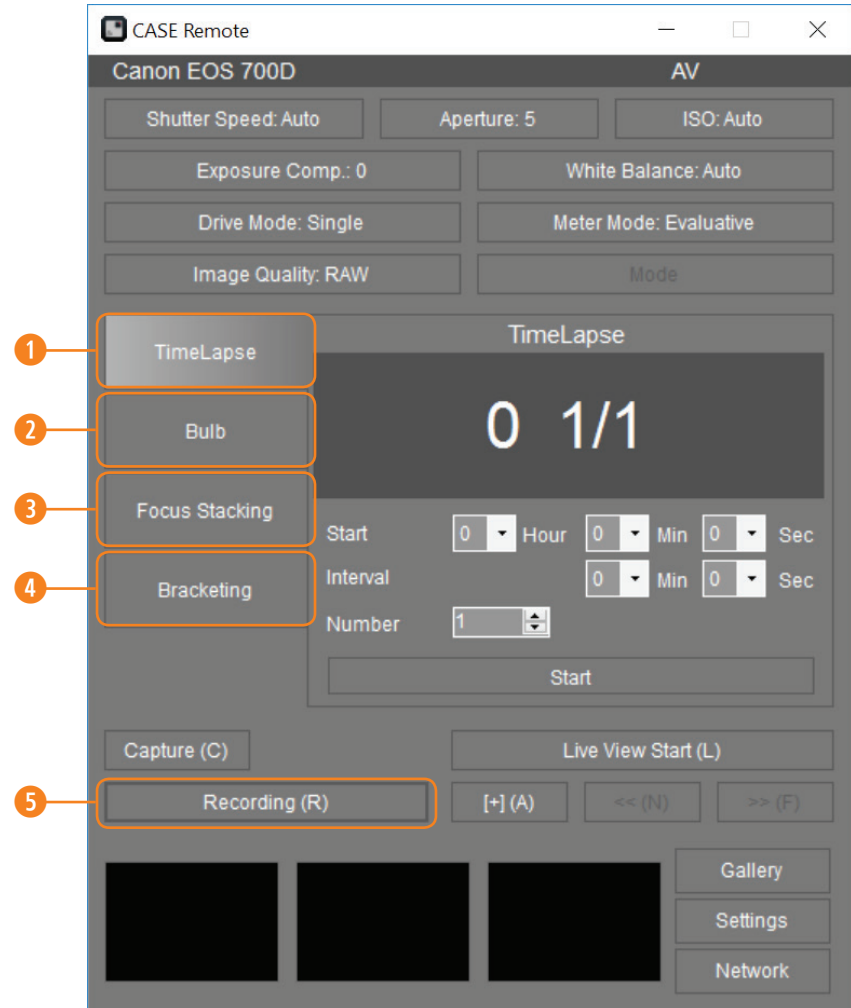
The Case Remote Program allows you to both review the current camera settings as well as adjust them. Any setting changes made on the camera will be updated in the program real-time. Likewise, any changes made in the program will be displayed appropriately on the camera.



FOCUS

Case Remote options to change/alter focus:

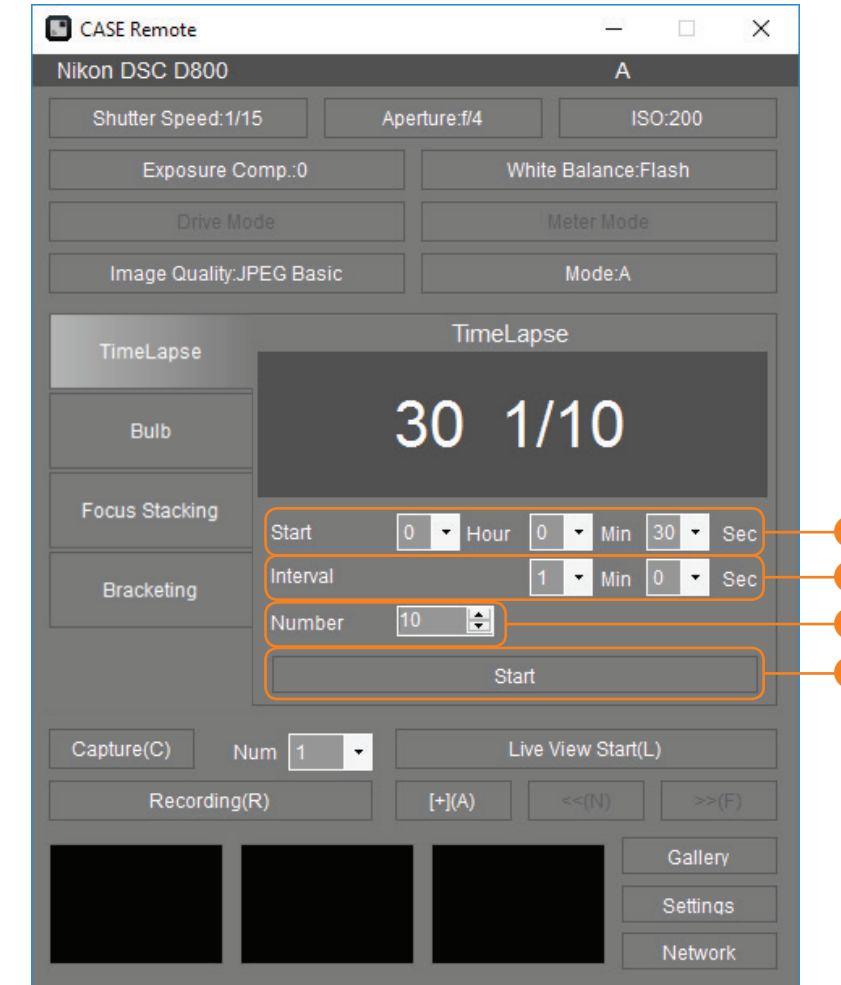
- 1 Click Focus in Live View
- 2 Auto Focus
- 3 Manual Focus
- 4 Zoom
- 5 Grid



ADVANCED FUNCTIONS

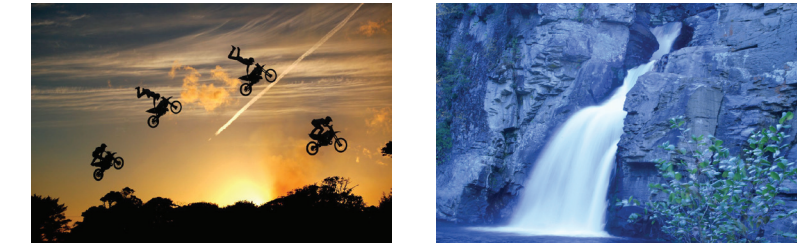
Click the Advanced Functions Button to access your advanced function menu. These functions include:

- 1 Time Lapse
- 2 Bulb Time
- 3 Focus Stacking
- 4 Bracketing
- 5 Movie Mode



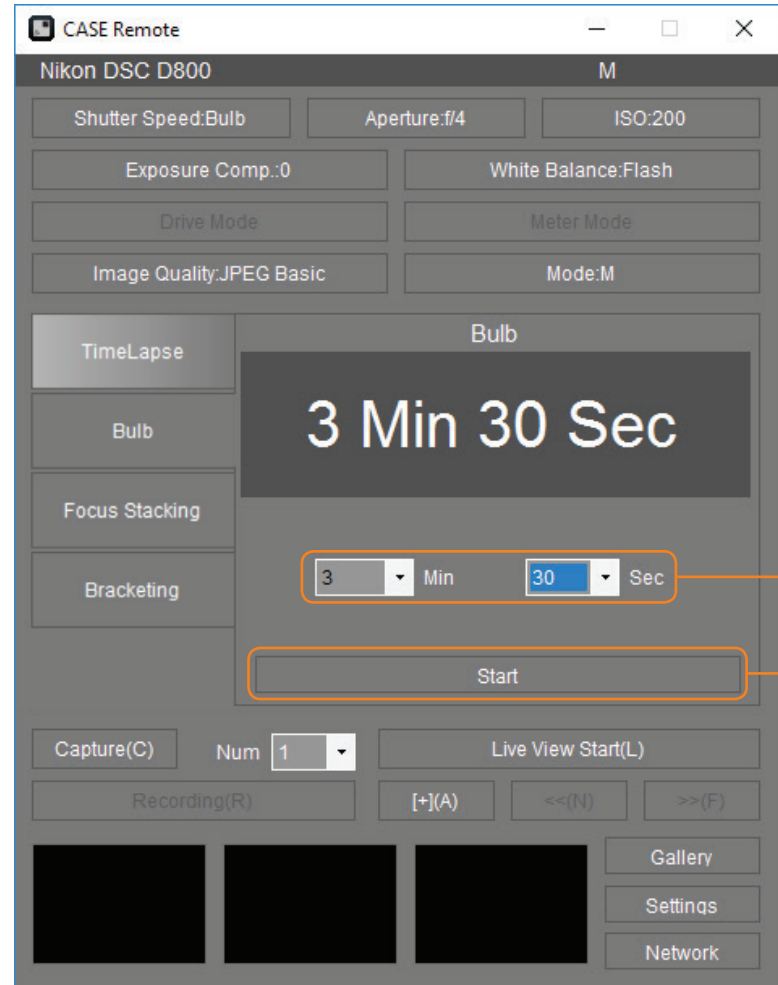
TIME LAPSE

Time Lapse photography takes multiple shots over a determined period of time.



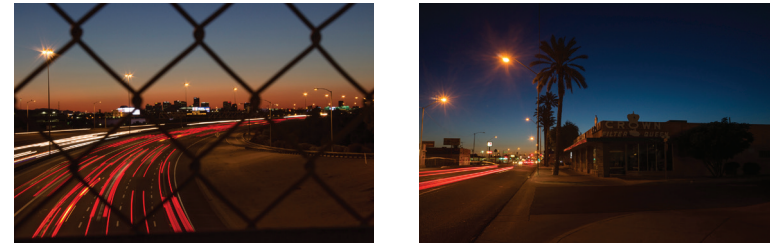
HOW TO USE TIME LAPSE

- 1 Select the Start time - the delay after you press the shutter button
- 2 Select the Interval time - the time between each shot
- 3 Select the Number of shots, up to 1000
- 4 Click the Start button to begin taking shots



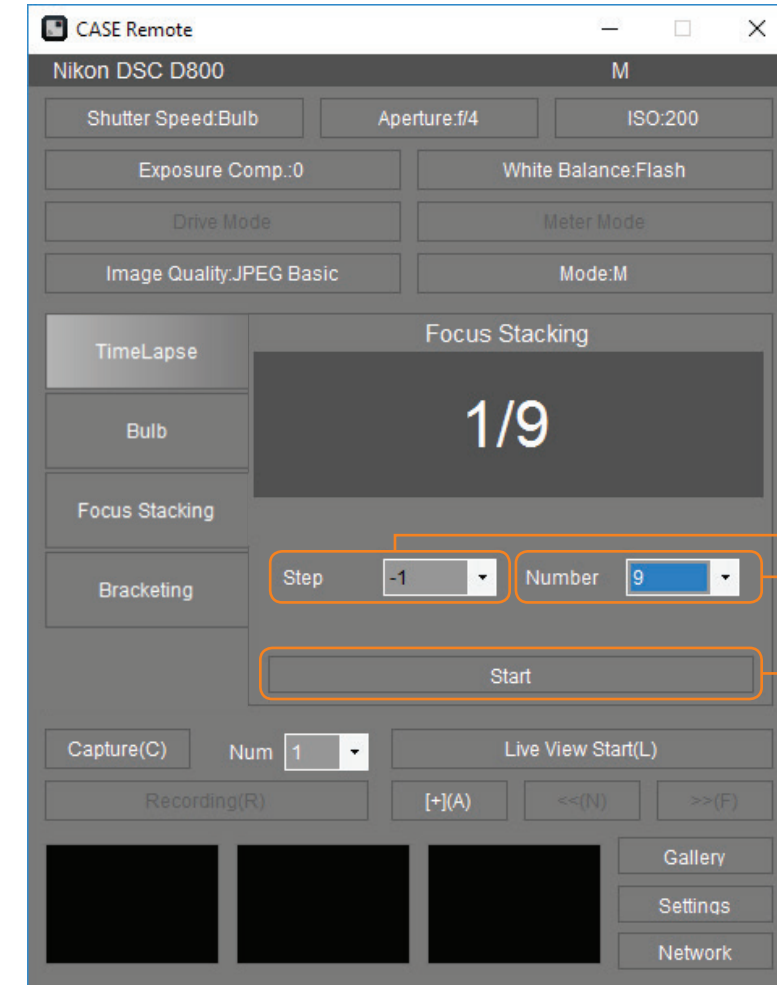
BULB TIME

Keep your camera's shutter open for a long exposure photo.



HOW TO USE BULB TIME

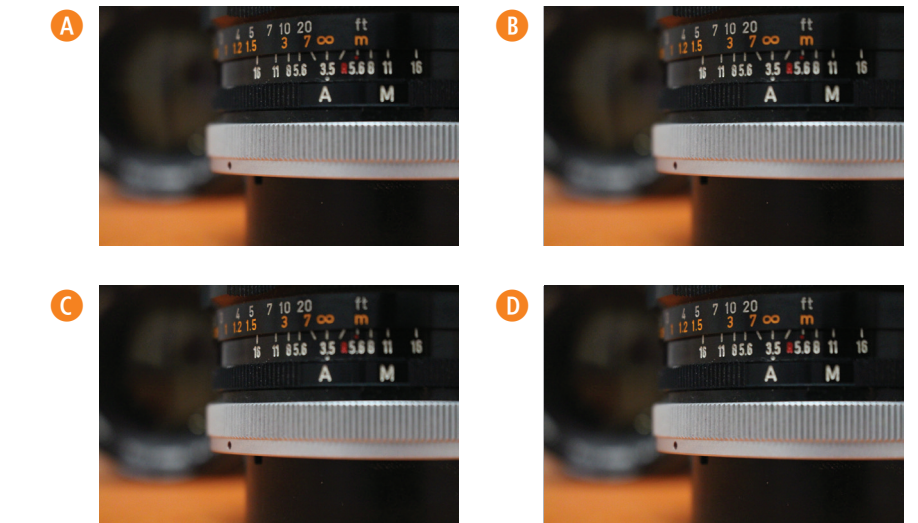
- 1 Set the duration of your shot
- 2 Click the Start button to begin taking shots



FOCUS STACKING

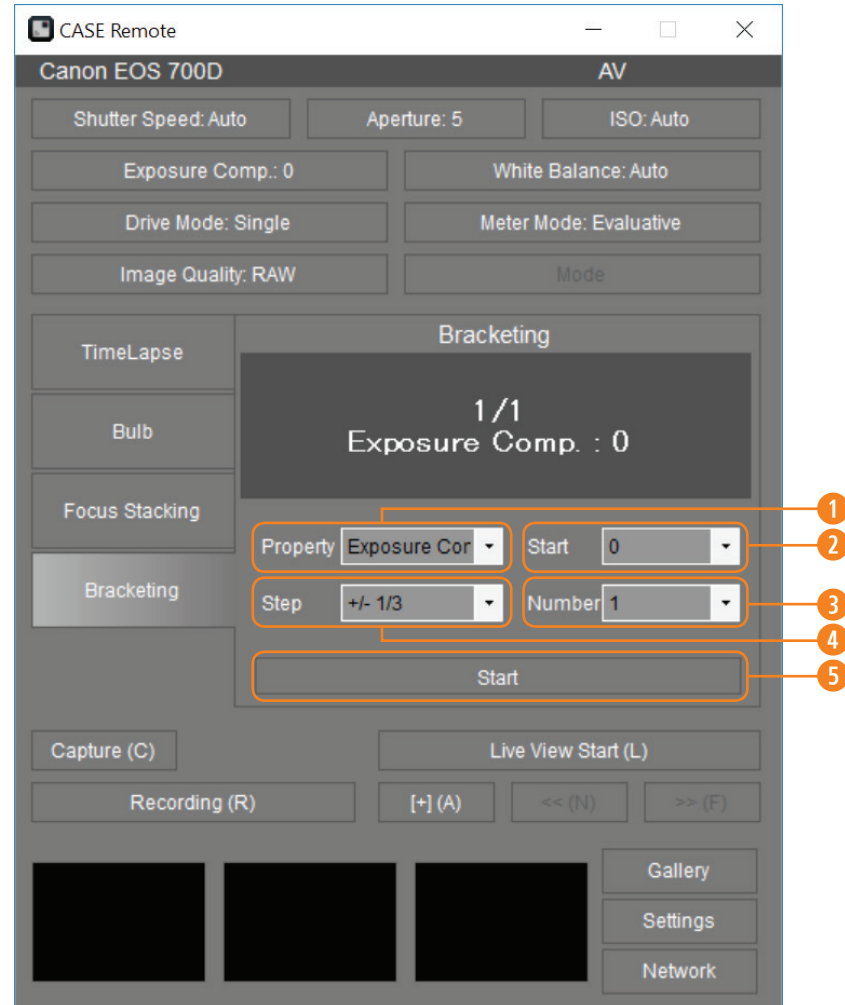
The Focus Stacking function can be used to take shots of the same view at different focal distances. These images can then be post processed together so that the entire view is in focus.

$$A + B + C = D$$



HOW TO USE FOCUS STACKING

- 2 Select the focal length Steps
+1/-1 small step, +2/-2 medium step, +3/-3 large step
- 3 Select the Number of shots, up to 9
- 3 Click the Start button to begin taking shots

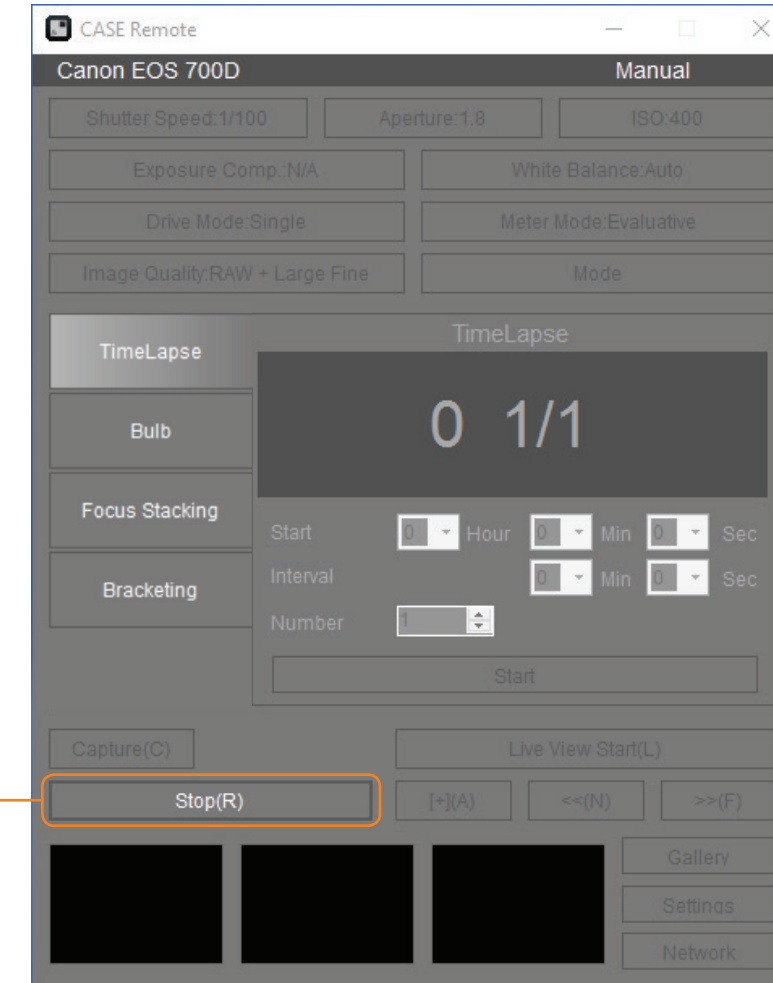


BRACKETING/HDR

Bracketing or HDR takes multiple photos; one using the camera's settings, and a series intentionally underexposed, and intentionally overexposed. The images are then combined in post processing into an image with preferred exposure.

HOW TO USE BRACKETING/HDR

- 1 Select the desired method to change exposure
- 2 Select the starting exposure compensation
- 3 Select the desired number of shots
- 4 Select the exposure compensation stepping
- 5 Click the start button to begin taking shots

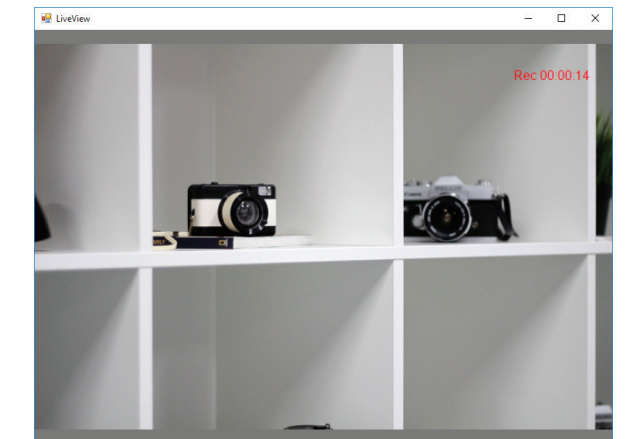


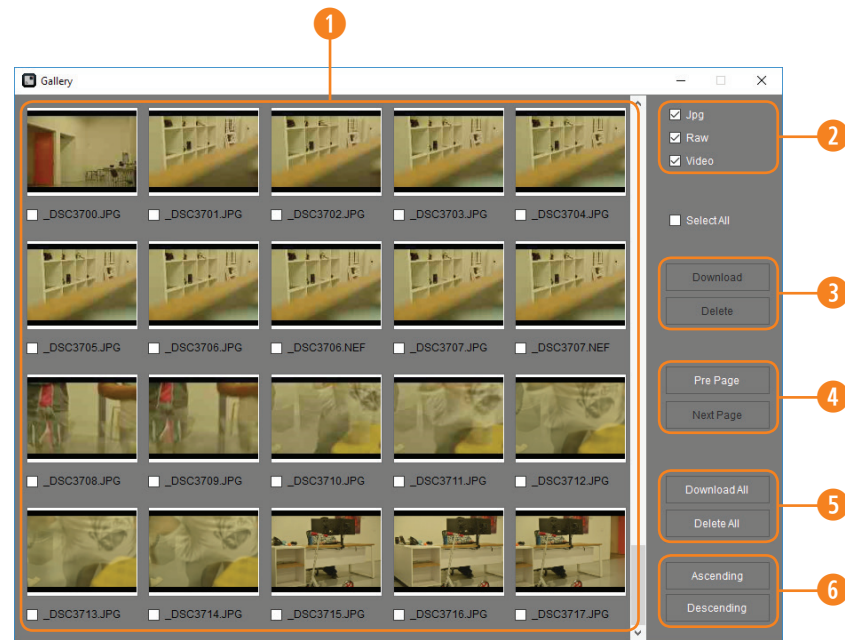
MOVIE

The Movie Mode in the Case Remote App allows you to capture video and transfer the video to your device – wirelessly.

HOW TO USE MOVIE

- 1 Press Capture to begin taking video.
- 2 Press Stop to stop recording.

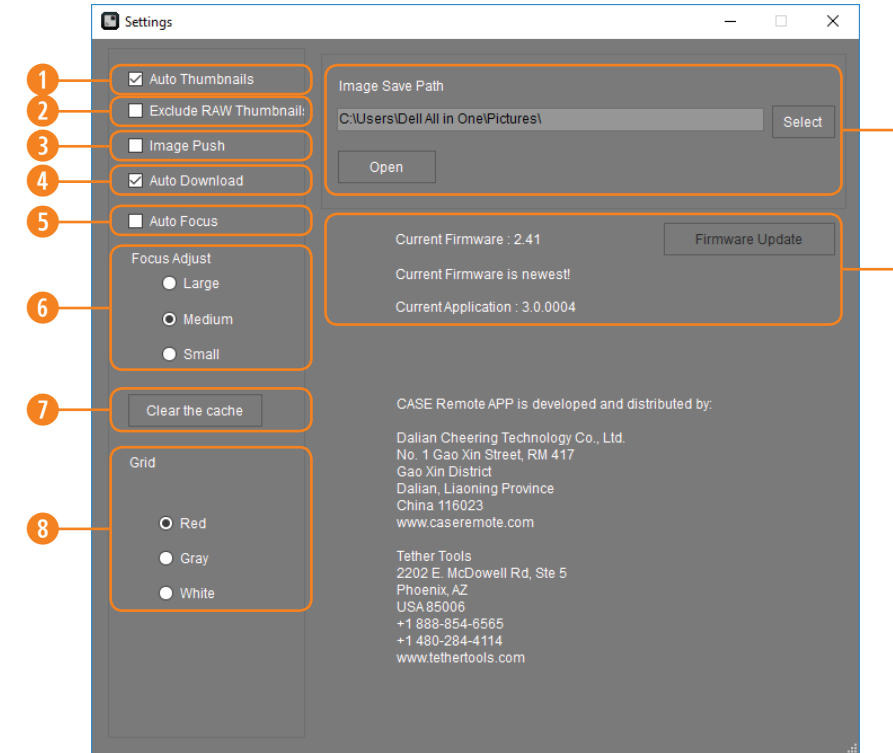




GALLERY

The gallery provides an array of thumbnail images of shots that are stored on your camera's SD card. In the gallery you can download, delete, or review individual or a selected number of photos.

- 1 Photos on the camera's card
- 2 Media filter based on JPEG, RAW and Video files
- 3 Download or delete selected photos
- 4 Page through SD card photos
- 5 Download or delete ALL photos
- 6 Change order of photos



SETTINGS

- 1 **Auto Thumbnails:**
Automatically shows thumbnail preview after every shot
- 2 **Exclude RAW Thumbnail:**
Exclude the RAW thumbnails from displaying in thumbnails
- 3 **Image Push:**
Automatically open image in computers default program
- 4 **Auto Download:**
Automatically downloads the photo to your computer after every shot. NOTE: Auto Download must be activated
- 5 **Auto Focus:**
After pressing the shutter button, the camera will auto focus, then take a photo
- 6 **Focus Adjust:**
Set the adjust step for manual focus
- 7 **Clear Cache:**
Removes thumbnails and Auto Downloads from device
- 8 **Grid:**
Enable grid. Green, red or white
- 9 **Image Save Path:**
Set location of downloaded photos on computer
- 10 **Firmware Update:**
Current firmware version and firmware update button

If you have any questions or concern while using the Case Air Wireless Tethering System, please email us at customerservice@tethertools.com or call 1-888-854-6565.



CASE Air is designed and manufactured by CheeringTech and distributed by Tether Tools.

© 2018 Tether Tools Inc. All Rights Reserved. Tether Tools, and the Tether Tools logo are trademarks of Tether Tools Inc., registered in the U.S. and other countries.

